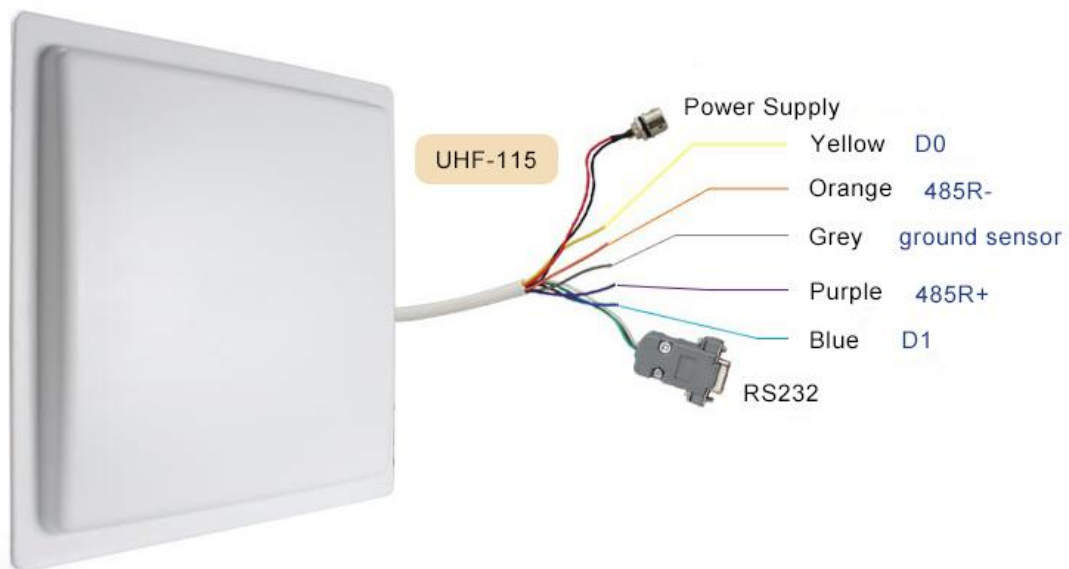
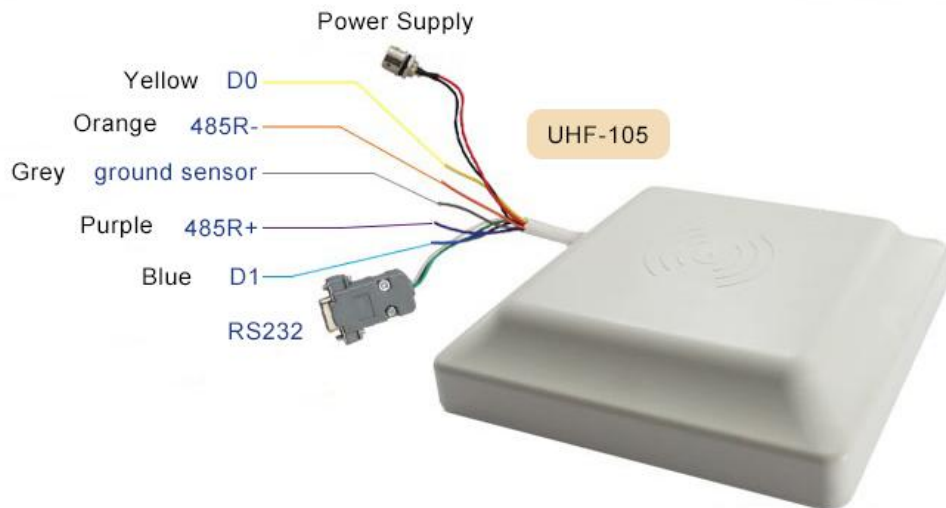




UHF-105	UHF-115	UHF-05
UHF Long range reader 1-5M	UHF Long range reader 5-15M	USB Card Issuing Device
		





UHF Cards and Tags(compatible with UHF-105 and UHF-115) - do LOGO customized FREE if based on 2000pcs				
Model	UHF-01	UHF-02	UHF-03	UHF-04
Picture				
UHF Cards and Tags(compatible with UHF - 105 and UHF - 115)				
Model	UHF-04	UHF-05	UHF-06	UHF-07
Picture				

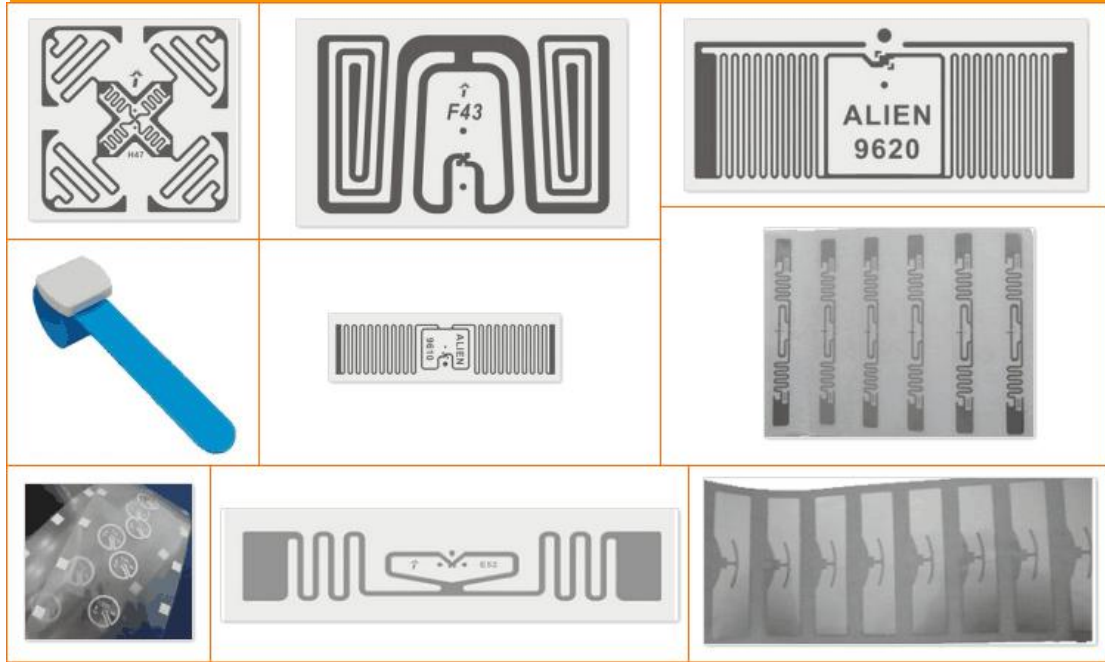


Diagram:

1 RED +12VDC (7-12VDC power supply)

2 Black GND

3 Green DO (Wiegand data 0)

4 White D1(Wiegand data 1)

5 Brown TXD (RS232 transmitter)

6 Orange RXD (RS232 receiver)

7 Blue A RS 485

8 Purple B RS 485

9 Yellow

IN1

Card reader input

10 Gray Beeper



Technical Parameters:

Working Frequency: 868MHz

Reading Distance stable is 12M.maximal is 30M

Recognition Speed >120km/h

Support protocol ISO-18000-6B or ISO-18000-6C(EPC G2)

Antenna Gain 12dbi

Polarization horizontal polarization

Voltage 12VDC \pm 10%

Current <400mA

Power consumption <5W

Communications

interface

Wiegand26bit 34bit 42bit RS232 RS485 10/100M

Ethernet



Latest Demo Ver:3.3.0.2

RFID Reader Demo - [Ver:3.3.0.2]

DISCONNECT(C) LANGUAGE RCP LOGGING(L) HELP(H)

READ DEMO | BASE SETTINGS | ISO18000-6B READ&WRITE | EPC(GEN 2) READ&WRITE

EPC(GEN 2) Identify

Card No: 00-00-00-00-00-00-00-00-00-00 Identify(E)

EPC(GEN 2) Read

Block: 1-EPC Address: 2 Length: 2 (Length not more 16)

Data(HEX): Read(A)

Data(ASCII):

EPC(GEN 2) Write Card

Block: 1-EPC Address: 2 Length: 2 (Length not more 16)

Data(HEX): 00-00 Write(B)

Data(ASCII): 00

Quick Write Card Zone(Weigand Card)Max 4 Byte

Card Type: 3byte(WG26) Card Position: 0 Auto Add 1 Auto Hex

DEC HEX WG Plus 1

Write Num: 00000000 00-00-00 000,00000 Minus 1 Write Tag(F12)

Be Written Num:

Time	RCP Type	RCP Packet(HEX)	Time	Current Status
14:24:13 524	设备回复	CC FF FF BD 00 08 01 08 01 00 05 FF 03 FF 61	14:24:13 514	操作 基本参数 成功
14:24:13 534	下发命令	7C FF FF 31 32 00 23	14:24:13 524	操作 成功
14:24:13 534	设备回复	CC FF FF 31 00 03 01 08 01 F8	14:24:13 544	操作 输出参数 成功
14:24:13 654	设备回复	CC FF FF 31 00 03 01 08 01 F8	14:24:13 654	操作 输出参数 成功

CONNECTED | USB | V1.15 | Type:PC - Version:V3.67 - Address: 65535 | 操作 输出参数 成功